

NOT SHOWN - PASSENGER ELEVATOR - It is off this rear covered deck, and Exits near the Hot Tub

NOT SHOWN - Uncovered 20' x 20' deck. Its an outside cooking & sitting area

NOT SHOWN This is where the rear stairs start. There is a locking Steel Gate on this deck.

Dear Traveler,
As you plan your perfect vacation, you have many choices. Your Vacation House should meet all your expectations & if possible, exceed them! To that end, this layout, shows that the house is quite open. There are 5 bedrooms, but one Bedroom (with 2 bunk beds) is "nested" in another bunk room. The loft also has a very open plan.

We've found this works best for same gender groups, like Golfer Groups, Spiritual Retreats, Large close families, couples who are close friends, with children, & long term friends comfortable with each other.

Think a Slumber Party would be Great Fun?
This is the house for you & your group!

Hours: We do not give tours (At anytime. Not prior to or after booking). We also do not disclose the address. With on-line calendars & photos showing all the valuable electronics, many Vacation Home Owners have found this to be an expensive mistake. Also Every possible angle has been photographed & is posted on the house's website. With this Layout, there is no reason for a tour.

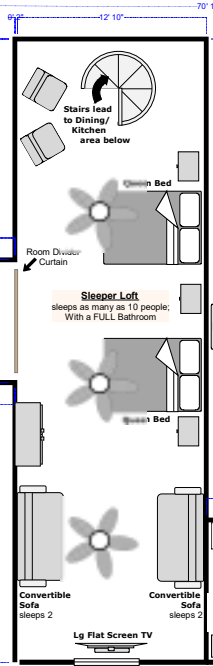
Location: The house is on the Biloxi River, Just North of I-10, in the City Limits of Gulfport in a safe, sparsely populated subdivision. The average age of the community seems to be between 50 - 70 years old. Mostly retirees.

If you find the House Featured Here, The Great Escape River House, Sleeping up to 27, is more Vacation house than you need, or not as much house as you need, please consider renting my 2nd Vacation Rental: The River Lookout.

MY 2nd RENTAL... RIVER LOOKOUT... Sleeps 16
Not right next door, but within easy walking distance, on the same street. If your group likes to spread or your count exceeds 27 people, Renting River Lookout in addition to the Great Escape River House will allow up to 43 people. It has many of the same amenities, such as a swimming pool, billiards, and more... Its Website is:

www.TheGreatEscapeRiverLookout.com
(not the house featured here)
River Lookout Layout available upon request

www.GulfportVacationHome.com
Email: TheGreatEscapeRiverHouse@gmail.com
Patricia Dalton (Owner), (504) 669-0548



NOTE:
THIS IS AN ELEVATED HOUSE - There are several stairs that must be ascended to gain access to the Main Floor, shown above. The Stairs do have an easy "Rise" & "Fall", the treads are concrete, the railing is wrought iron. Making the Stairs easy to ascend & descend.

NOT SHOWN PASSENGER ELEVATOR: with a Signed Elevator Release, agreeing to follow Elevator Instructions, Guests can access to this amenity. This is an outside Elevator. This Elevator makes the house suitable for Guests in walkers, wheelchairs, or who have difficulty climbing stairs.

NOT SHOWN OUT DOOR KITCHEN (UNCOVERED DECK OFF BACK PORCH)
Gas Grill, Hibachi Grill, Boiler, Sink, picnic table and more can be found here.

UNDER THE HOUSE - You will find picnic tables and a charcoal grill. At this documents creation There was also a ping-pong table and out front a basketball goal. There is also a Hammock that can be moved from under the house, towards the River, yard, wherever. Please return it to under the house prior to your leaving or before bad weather.

POOL AREA - Above ground, 30' x 15' pool, surrounded by a large wooden deck on all sides. The Deck has a stainless steel table to prepare food, a Large Stainless Steel Sink, making cleanups easy. There are tables and seating for over 20 people on the wooden deck surrounding the pool. There is ramp to access the pool. The deck around the pool is fenced. The ramp has fencing. At the bottom of the ramp is a combination pad lock. If you have small children you should keep the pool area locked during your stay.

RIVER - There is a dock directly behind The Great Escape River House. Bring your fishing poles & License. You can fish from this dock or bring a boat to dock it here.

KEG OF BEER? At the time of this Floor Plan's creation, A Keg of Domestic Beer (Budite, Coors, Miller, etc.) can be waiting for you on tap for \$200; Specialty (Heineken, Blue Moon, etc.) for \$225/\$250. We'll pre-order the keg, remove the empty keg, take the empty core keg in, stand in line, purchase a new keg, haul it to the car. Bring it upstairs, use a special dolly (as not to damage the floor), hook up the CO2, and have it waiting for the guest upon arrival. This adds about \$10/PP to most Booking. We do not allow guests to install their own Kegs. FYI - this should be a novelty decision. Its actually more economical to purchase most cans & bottles and bring them to the house.

YOUR QUOTE & FEES: Base Rates vary from Peak times to Off Peak times. We wish Rates could be based on 27 people, but to be competitive, rates are based on far less people. As the people count rises, the cost does go up, but the per person cost goes down.

Propane Option For a tad more than the cost, we will have our tank filled & waiting for you.

Rental is Not any costs associated with getting paid, are paid by guest.

A Service Fee is often charged by Listing Sites. It is never Charged when booking directly with owner. Feel Free to inquire on the Contact Page of the house's Website:
<http://www.gulfportvacationhome.com/contactus.html>

GREAT ESCAPE RIVER HOUSE WEBSITE - For more details, Answers to Frequently asked Questions, details on the booking / Reservation Process, Rates, Availability, Lot of Photos, & much more information, please check out the House's website.

www.GulfportVacationHome.com
~ Sleeps up to 27 (The House featured here)